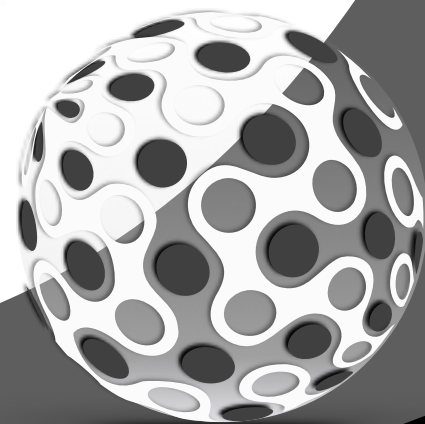


MALLETS

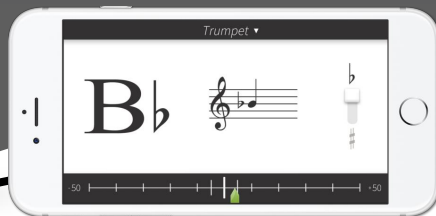
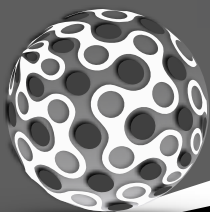
BEGINNING BAND MUSIC BOOK

NAME _____



PART 1

BANDMATE CHROMATIC TUNER
FREE DOWNLOAD!



FREE APP FOR APPLE & ANDROID
www.BandmateTuner.com

BAND KARATE BELT SYSTEM

COMPLETE THE PASS-OFFS & EARN YOUR BELT!

SILVER BELT

#53 Bb Scale | Rhythms 33-40 | #47 "Mary" | #50 "Laughing"

BLACK BELT - ALMOST THERE!

↑6↓6 | Rhythms 25-32 | #42 "Saints" | #45 "Ode"

GREEN BELT

↑5↓5 | Rhythms 21-24 | #35 "Frere" | #39 "Old Mac"

RED BELT - HALFWAY POINT!

16sec. Longtone | ↑4↓4 | Rhythms 17-20 | #27 "Aura" | #32 "Donkey"

PURPLE BELT

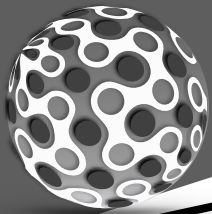
↑3↓3 Notes | Rhythms 9-16 | #19 "Miss Mary" | #23 "Jim Along"

BLUE BELT

12sec. Longtone | Rhythms 5-8 | #14 "Hot Crossed" | #18 "Mary Had"

WHITE BELT

8sec. Longtone | Rhythms 1-4 | #11 "Starlite" | #12 "Rumba"



RHYTHM STUDIES - 2

9 4/4

10 4/4

11 4/4

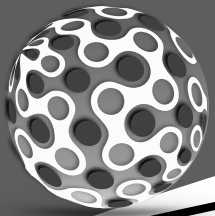
12 4/4

13 4/4

14 4/4

15 4/4

16 4/4



RHYTHM STUDIES - 3

17 $\frac{4}{4}$

18 $\frac{4}{4}$

19 $\frac{4}{4}$

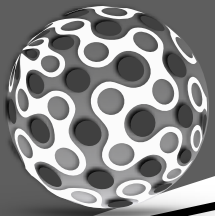
20 $\frac{4}{4}$

21 $\frac{4}{4}$

22 $\frac{4}{4}$

23 $\frac{4}{4}$

24 $\frac{4}{4}$



RHYTHM STUDIES - 4

25 $\frac{4}{4}$

26 $\frac{4}{4}$

27 $\frac{4}{4}$

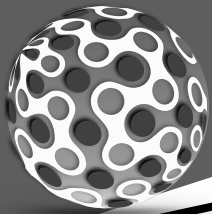
28 $\frac{4}{4}$

29 $\frac{4}{4}$

30 $\frac{4}{4}$

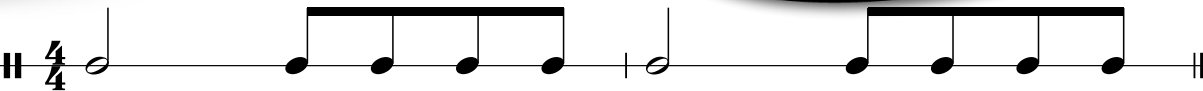
31 $\frac{4}{4}$

32 $\frac{4}{4}$

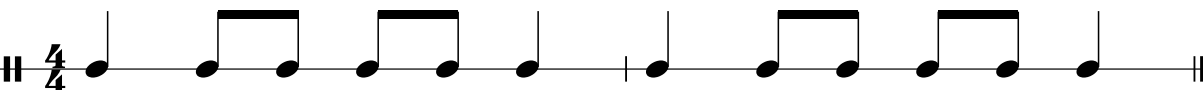


RHYTHM STUDIES - 5

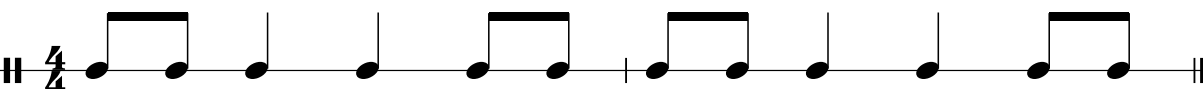
33



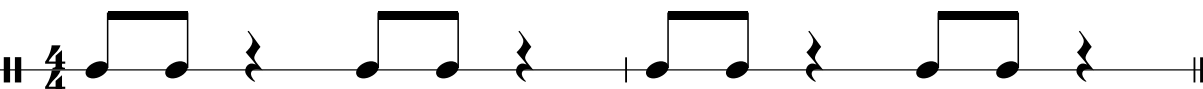
34



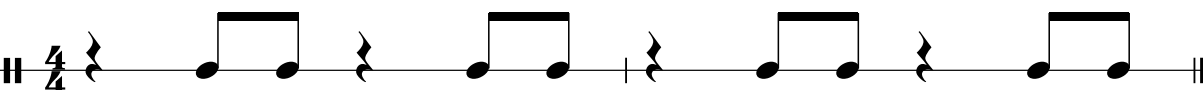
35



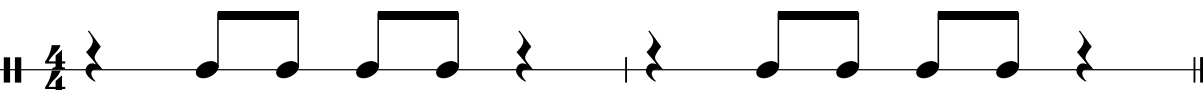
36



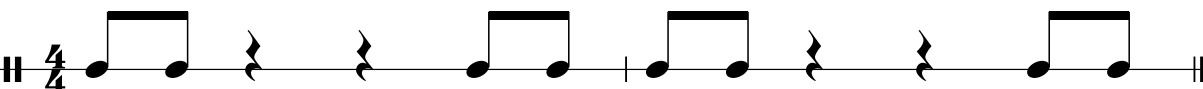
37



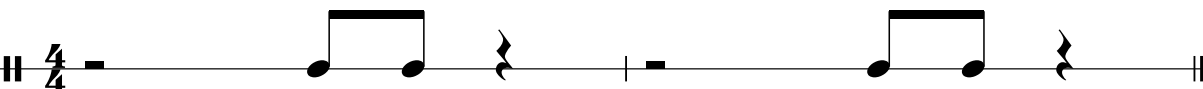
38

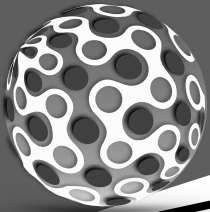


39

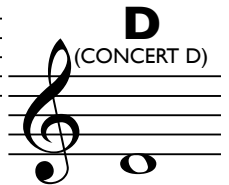
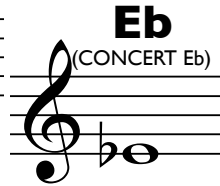
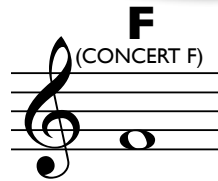
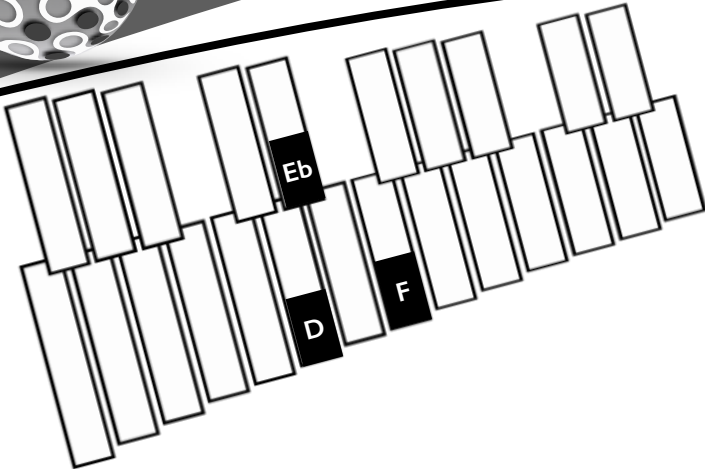


40





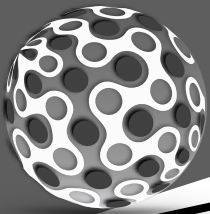
BEGINNING BAND 1ST NOTES



1 THE FIRST NOTE

2 A HAIR LOWER

3 WHICH NOTE IS IT?



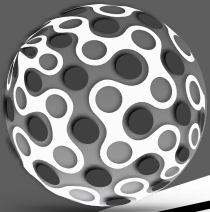
BEGINNING BAND 1ST NOTES

4 3RD NOTE DOWN

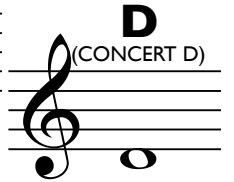
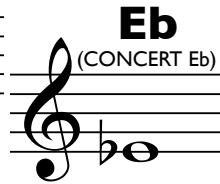
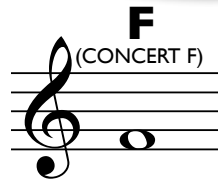
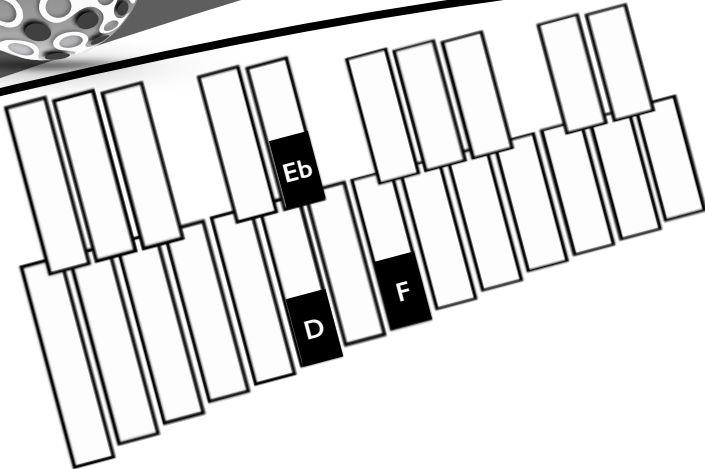
5 DOWN & UP

6 DOUBLE UP

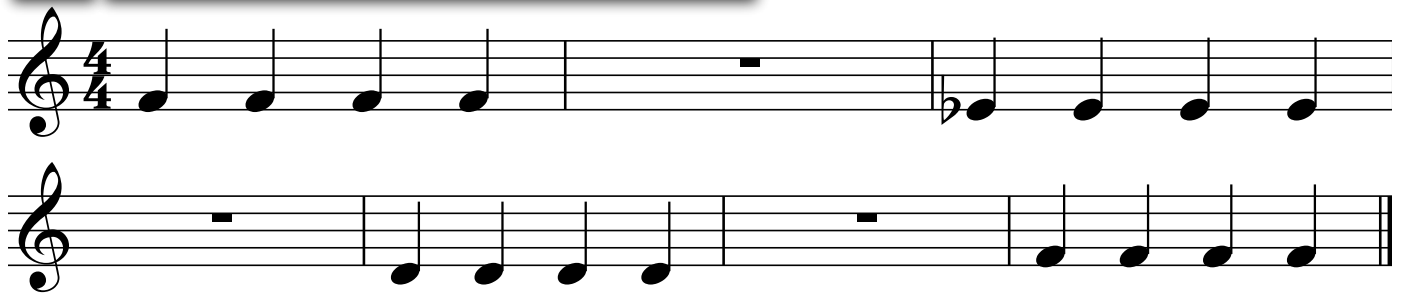
7 3 IN THE MIX



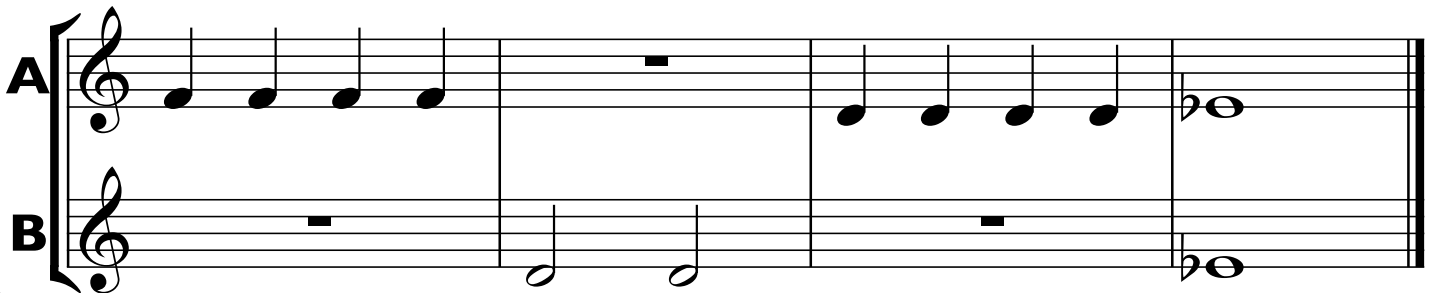
BEGINNING BAND 1ST NOTES

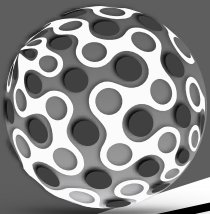


8 QUARTER ATTACK



9 DUET DUEL





BEGINNING BAND 1ST NOTES

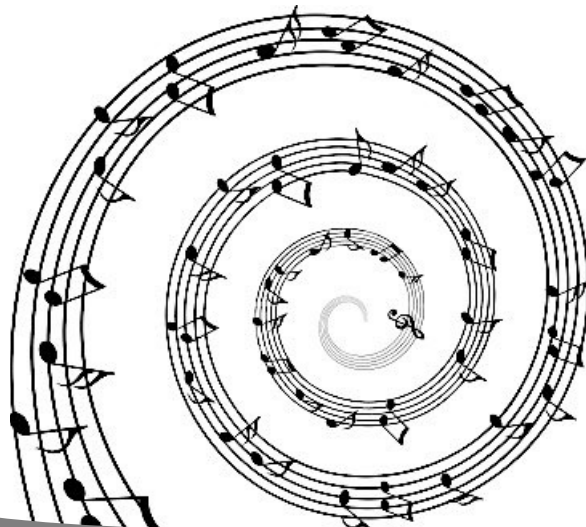
10 RAIN RAIN, GO AWAY

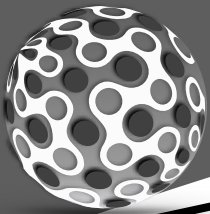


11 STAR-LITE, STAR-BRITE



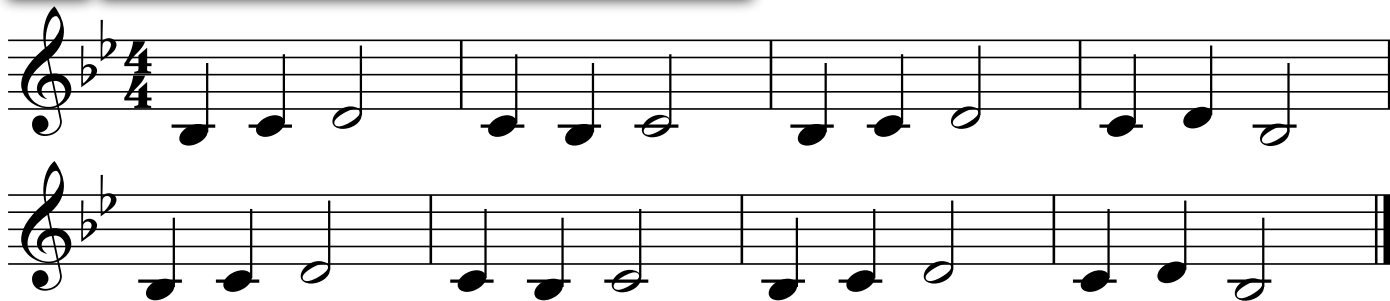
12 3 NOTE RUMBA





BEGINNING BAND NEXT 2 NOTES

16 GENTLY SLEEP



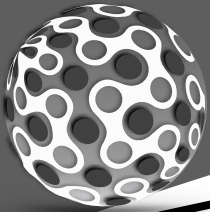
17 DOWN BY THE STATION



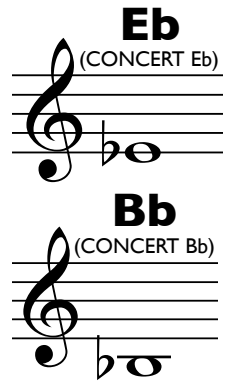
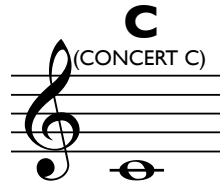
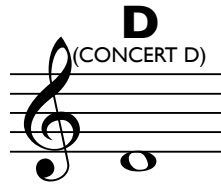
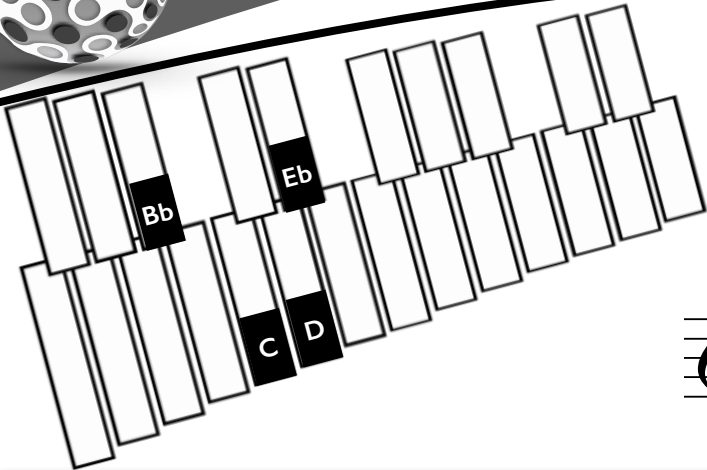
18 MARY HAD A LITTLE LAMB



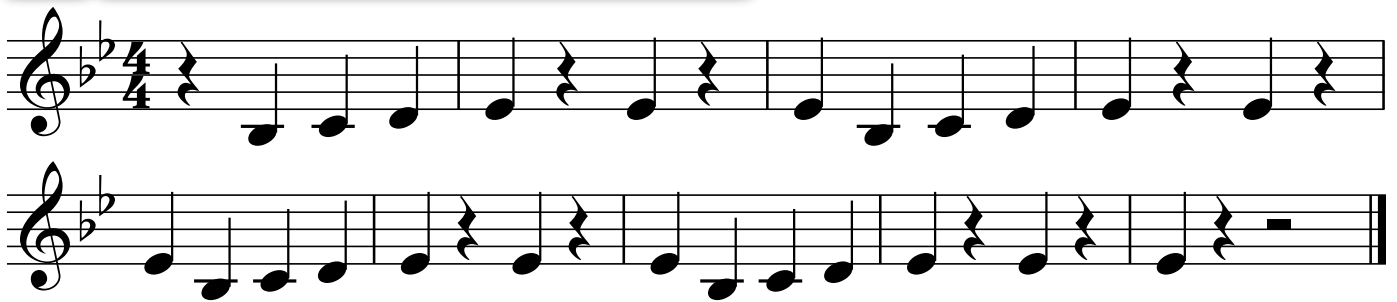
**THIS IS WHY WE
CLEAN OUR HORNS!!!**



BEGINNING BAND 4 NOTE SONGS



19 MISS MARY MACK

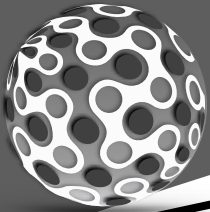


20 PEPPERONI PIZZA

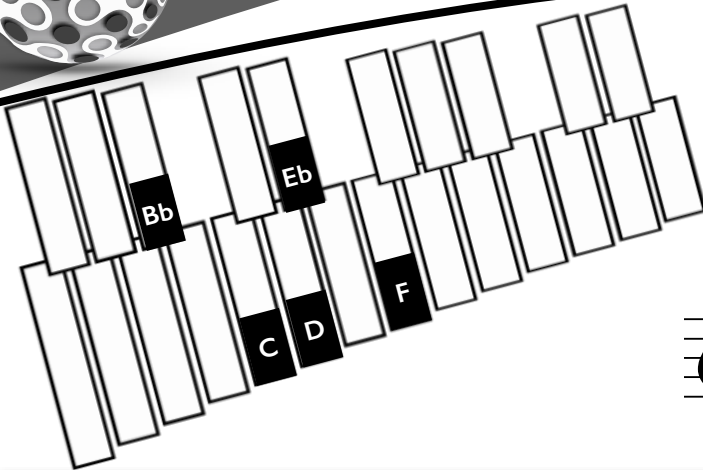


21 NORWEGIAN FOLK SONG





BEGINNING BAND STRIVE FOR FIVE



F
(CONCERT F)

E_b
(CONCERT E_b)

D
(CONCERT D)

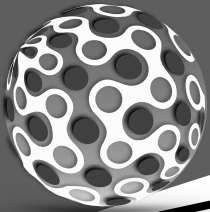
C
(CONCERT C)

B_b
(CONCERT B_b)

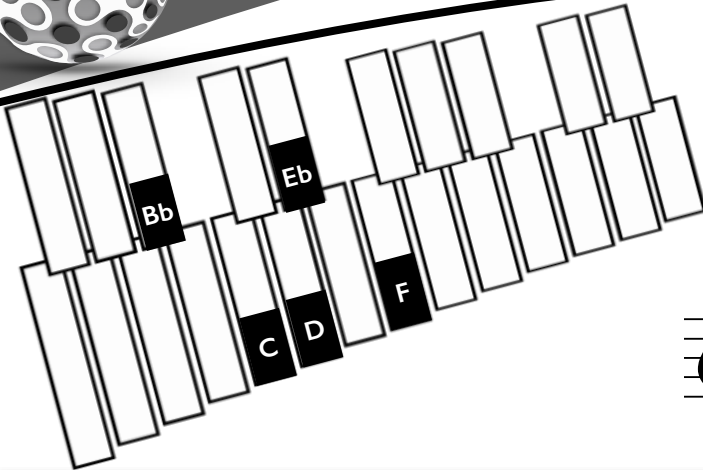
22 FIVE NOTE PATTERN

23 JIM ALONG JOSIE

24 GO TELL AUNT RHODIE



BEGINNING BAND STRIVE FOR FIVE



F
(CONCERT F)

E_b
(CONCERT E_b)

D
(CONCERT D)

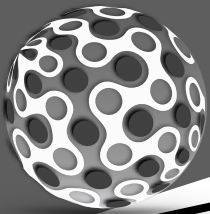
C
(CONCERT C)

B_b
(CONCERT B_b)

25 MERRILY WE ROLL ALONG

26 LIGHTLY ROW

27 AURA LEE



28 JINGLE BELLS

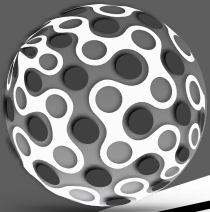
Musical notation for 'Jingle Bells' in 4/4 time, featuring a treble clef, a key signature of two flats (B-flat and E-flat), and a melody of eighth and quarter notes.

29 REST STOP

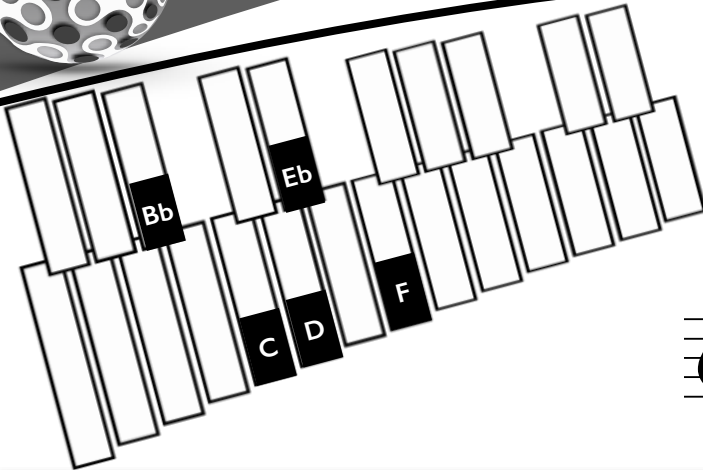
Musical notation for 'Rest Stop' in 4/4 time, featuring a treble clef, a key signature of two flats (B-flat and E-flat), and a melody of quarter notes with frequent rests.

30 DREYDL DREYDL

Musical notation for 'Dreydl Dreydl' in 4/4 time, featuring a treble clef, a key signature of two flats (B-flat and E-flat), and a melody of quarter notes.



BEGINNING BAND STRIVE FOR FIVE



D
(CONCERT D)

F
(CONCERT F)

C
(CONCERT C)

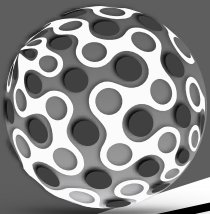
Eb
(CONCERT Eb)

Bb
(CONCERT Bb)

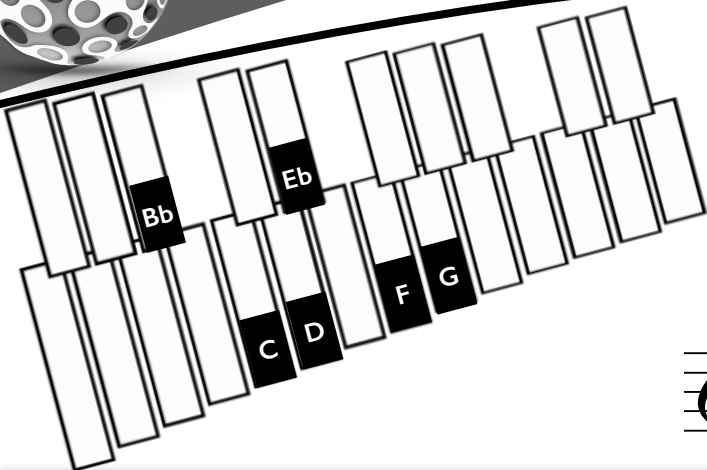
31 GOOD KING WENCESLAS

32 DONKEY ROUND

33 LITTLE FISH



BEGINNING BAND ADD 6 TO THE MIX



G
(CONCERT G)

F
(CONCERT F)

E_b
(CONCERT E_b)

D
(CONCERT D)

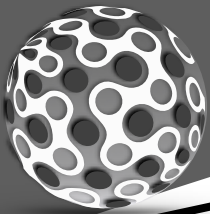
C
(CONCERT C)

B_b
(CONCERT B_b)

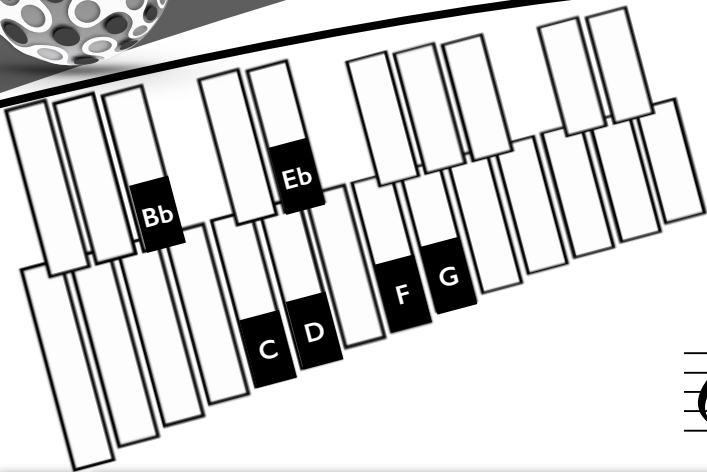
34 LONDON BRIDGE

35 FRERE JACQUES

36 MORNING FROM PEER GYNT



BEGINNING BAND ADD 6 TO THE MIX



G
(CONCERT G)

F
(CONCERT F)

E_b
(CONCERT E_b)

D
(CONCERT D)

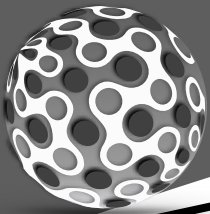
C
(CONCERT C)

B_b
(CONCERT B_b)

37 THIS OLD MAN

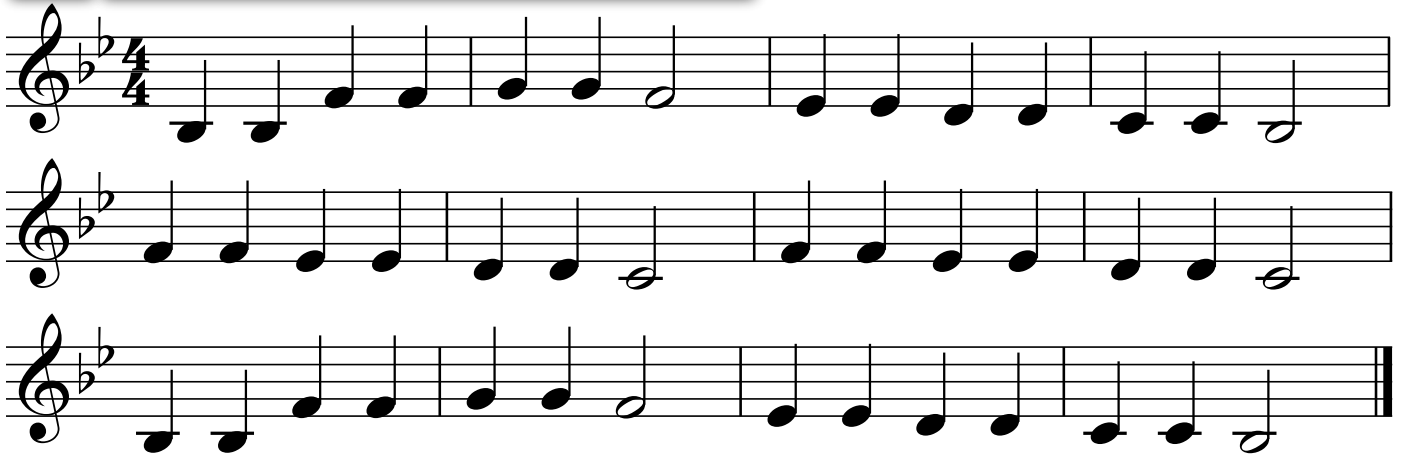
38 THE SNAKE CHARMER

39 OLD MAC DONALD

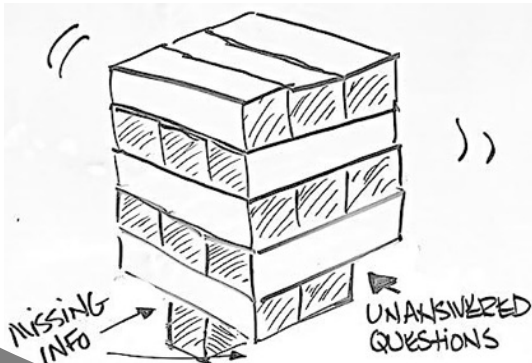


BEGINNING BAND ADD 6 TO THE MIX

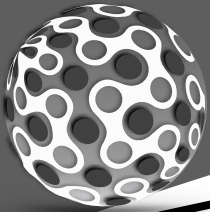
40 TWINKLE TWINKLE LITTLE STAR



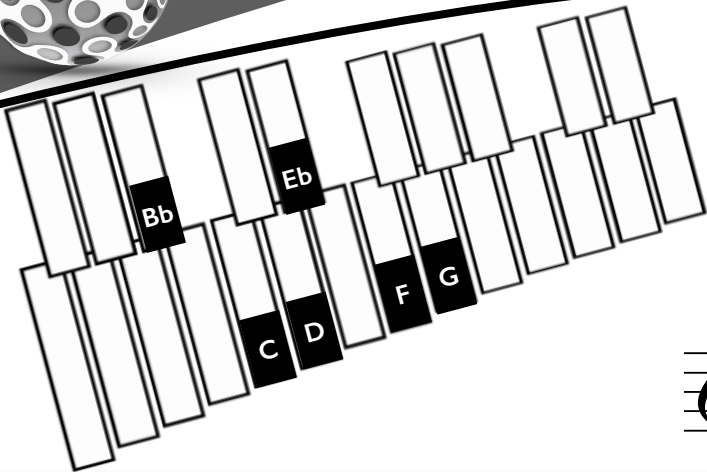
41 PEACE LIKE A RIVER



YOU CAN'T BUILD A
BAND WITH MISSING
PIECES...
IT WILL FALL OVER.



BEGINNING BAND ADD 6 TO THE MIX



G
(CONCERT G)

F
(CONCERT F)

Eb
(CONCERT Eb)

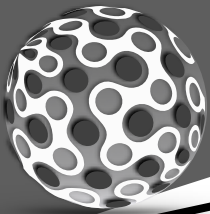
D
(CONCERT D)

C
(CONCERT C)

Bb
(CONCERT Bb)


42 SAINTS GO MARCHING IN

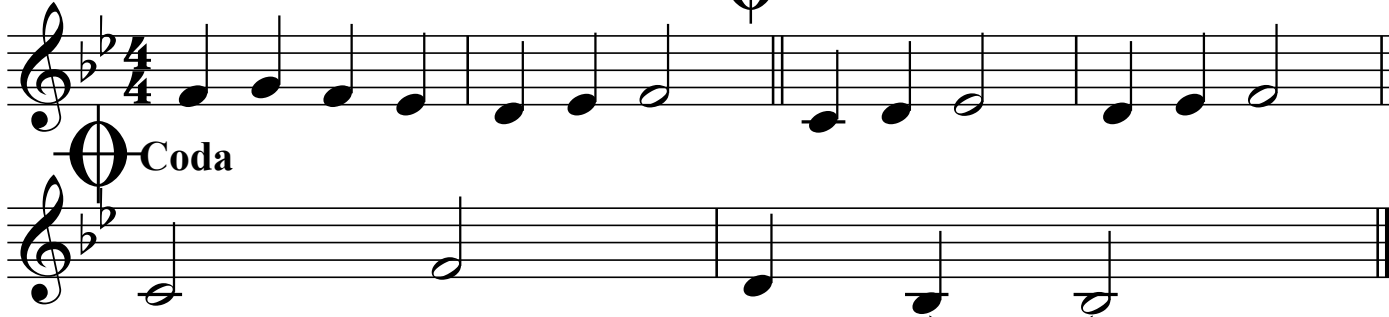
43 TWINKLE WITH A D.C. AL FINE



BEGINNING BAND ADD 6 TO THE MIX

44 LONDON BRIDGE D.C. AL CODA

To Coda  D.C. al Coda



Coda

45 ODE TO JOY



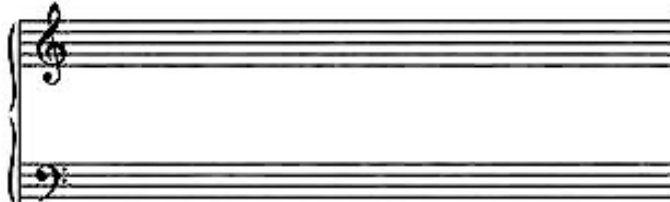
Fine

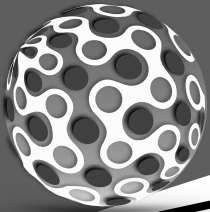
D.S. al Fine

THE SOUND OF SILENCE

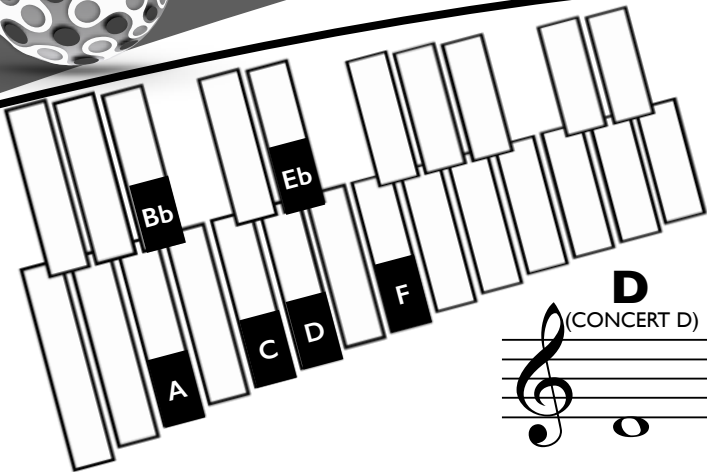
Larghissimo

J. S. Zamecnik





BEGINNING BAND 1 MORE BELOW



D
(CONCERT D)

C
(CONCERT C)

F
(CONCERT F)

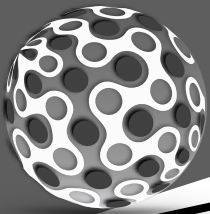
Eb
(CONCERT Eb)

Bb
(CONCERT Bb)

A
(CONCERT A)

46 DOWN ONE MORE

47 MARY ANN



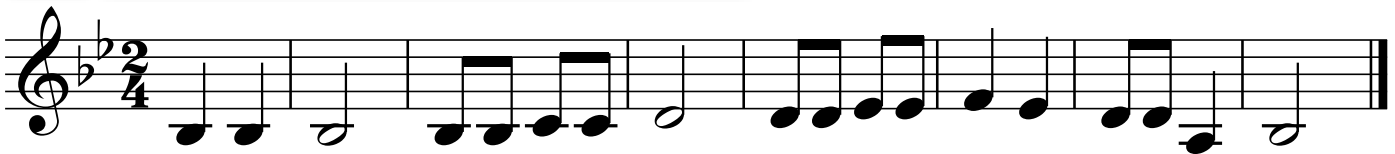
48 POLLY WOLLY DOODLE



49 SHOO, FLY

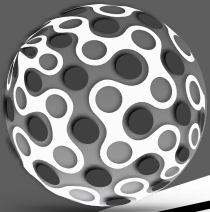


50 LAUGHING SONG



51 7 NOTE PATTERN





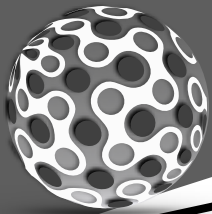
52 FOUR PART LITTLE STAR

Sheet music for the first system of "Four Part Little Star". It consists of four staves labeled A, B, C, and D. The key signature is one flat (Bb) and the time signature is 2/4. The melody is: G4 (quarter), A4 (quarter), Bb4 (quarter), C5 (quarter), D5 (quarter), C5 (quarter), Bb4 (quarter), A4 (quarter), G4 (quarter). The four parts are arranged as follows:

- Part A:** G4 (quarter), A4 (quarter), Bb4 (quarter), C5 (quarter), D5 (quarter), C5 (quarter), Bb4 (quarter), A4 (quarter), G4 (quarter).
- Part B:** G4 (quarter), A4 (quarter), Bb4 (quarter), C5 (quarter), D5 (quarter), C5 (quarter), Bb4 (quarter), A4 (quarter), G4 (quarter).
- Part C:** G4 (quarter), A4 (quarter), Bb4 (quarter), C5 (quarter), D5 (quarter), C5 (quarter), Bb4 (quarter), A4 (quarter), G4 (quarter).
- Part D:** G4 (quarter), A4 (quarter), Bb4 (quarter), C5 (quarter), D5 (quarter), C5 (quarter), Bb4 (quarter), A4 (quarter), G4 (quarter).

Sheet music for the second system of "Four Part Little Star". It consists of four staves labeled A, B, C, and D. The key signature is one flat (Bb) and the time signature is 2/4. The melody is: G4 (quarter), A4 (quarter), Bb4 (quarter), C5 (quarter), D5 (quarter), C5 (quarter), Bb4 (quarter), A4 (quarter), G4 (quarter). The four parts are arranged as follows:

- Part A:** G4 (quarter), A4 (quarter), Bb4 (quarter), C5 (quarter), D5 (quarter), C5 (quarter), Bb4 (quarter), A4 (quarter), G4 (quarter).
- Part B:** G4 (quarter), A4 (quarter), Bb4 (quarter), C5 (quarter), D5 (quarter), C5 (quarter), Bb4 (quarter), A4 (quarter), G4 (quarter).
- Part C:** G4 (quarter), A4 (quarter), Bb4 (quarter), C5 (quarter), D5 (quarter), C5 (quarter), Bb4 (quarter), A4 (quarter), G4 (quarter).
- Part D:** G4 (quarter), A4 (quarter), Bb4 (quarter), C5 (quarter), D5 (quarter), C5 (quarter), Bb4 (quarter), A4 (quarter), G4 (quarter).



BEGINNING BAND 4 PART SONGS

A

B

C

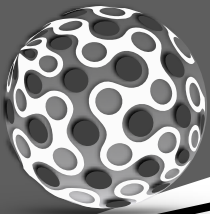
D

A

B

C

D



INSTRUMENT FINGERING CHART

The diagram illustrates the mapping between piano keys and concert notes. The keys are labeled as follows:

- White keys: A, Bb, C, D, E, F, G, A, Bb
- Black keys: Bb, Eb, Bb

Dashed lines connect the keys to musical staves showing the corresponding note names and concert names:

- White key A connects to a staff with note **A** (CONCERT A).
- White key Bb connects to a staff with note **Bb** (CONCERT Bb).
- White key C connects to a staff with note **C** (CONCERT C).
- White key D connects to a staff with note **D** (CONCERT D).
- White key E connects to a staff with note **E** (CONCERT E).
- White key F connects to a staff with note **F** (CONCERT F).
- White key G connects to a staff with note **G** (CONCERT G).
- White key A connects to a staff with note **A** (CONCERT A).
- White key Bb connects to a staff with note **Bb** (CONCERT Bb).
- Black key Bb connects to a staff with note **Bb** (CONCERT Bb).
- Black key Eb connects to a staff with note **Eb** (CONCERT Eb).
- Black key Bb connects to a staff with note **Bb** (CONCERT Bb).

GO ONLINE TO WATCH PERFORMANCES

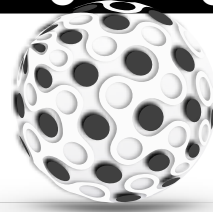
FLUTE

Nina Perlove
Hubert Laws
Dave Valentin
James Galway
Greg Pattillo
Julius Baker
Robert Aitken
Jean-Pierre Rampal
Jeanne Baxtresser
Benny Goodman
Artie Shaw
Woody Herman
Buddy DeFranco
Pete Fountain
David Shifrin
Richard Stoltzman
Julian Bliss
Larry Combs
Stanley Drucker
Thea King
Mitchell Lurie

CLARINET

Branford Marsalis
John Coltrane
Ben Webster
"Fathead" Newman
Harry Carney
Gerry Mulligan
Dana Colley
Ronnie Cuber
Hermann Baumann
Dennis Brain
Dale Clevenger
Philip Farkas
Barry Tuckwell

BARISAX



Joseph Alessi
Wycliffe Gordon
Christian Lindberg
Slide Hampton
Delfeayo Marsalis
Rubin Eubanks
Christian Lindberg
Ralph Sauer

HORN

Steven Mead
Loren Marsteller
Rich Matteson
Brian Bowman
Leonard Falcone

BARITONE

FAMOUS INSTRUMENTALISTS

Tommy Johnson
Roger Bobo
Jim Self
Doug Tournoquist
Sam Pfaffian
Dan Peratoni
Patrick Sheridan
Baadsvik Oystein

TRUMPET

Wynton Marsalis
Arturo Sandoval
Maynard Ferguson
Chris Botti
Bill Chase
Dizzy Gillespie
Wayne Bergeron
Allen Vizzutti
Chuck Mangione
Jens Lindemann

TUBA

Max Roach
Keiko Abe
Vic Firth
Lionel Hampton
Roy Ayers

Gerald Albright
Candy Dulfer
Charlie Parker
"Cannonball" Adderly
Johnny Hodges
Dr. Otis Murphy
Dr. Eugene Rousseau
Dale Underwood
Maceo Parker

ALTO SAX

PERCUSSION